

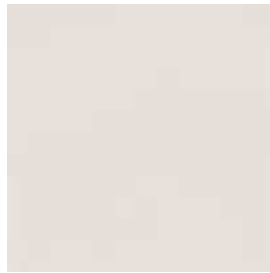
Larino Porcelain Wall & Floor Tile Collection



Beige
300.00x300.00x8.60mm



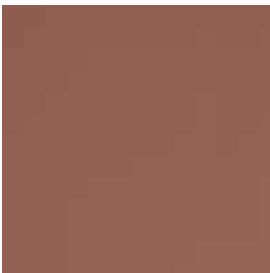
Grey
300.00x300.00x8.60mm



White
300.00x300.00x8.60mm



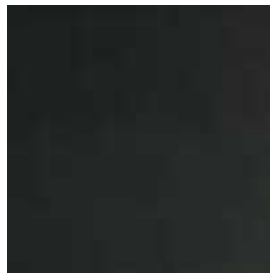
Light Green
300.00x300.00x8.60mm



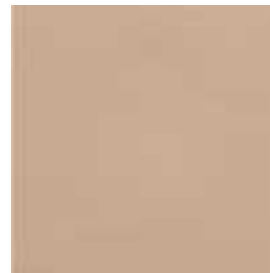
Terracotta
300.00x300.00x8.60mm



Yellow
300.00x300.00x8.60mm



Black
300.00x300.00x8.60mm



Pink
300.00x300.00x8.60mm



Larino Porcelain Wall & Floor Tile Collection

Blue	Dark Green
300.00x300.00x8.60mm	300.00x300.00x8.60mm

Note: Larino tiles are available 200x200mm 300x300mm sizes.

Product Details

Product Group	Group Bla: Fully Vitrified Pressed tiles
Typical application	Residential, commercial and light industrial interior application only

Pack Details

Tile Type	Size	Tiles Per Pack	m2 Per Pack
Wall Tile	200x200x8.6mm	12	1.08
Wall Tile	200x200x8.6mm	12	1.08
Wall Tile	300x300x8.6mm	12	1.08
Wall Tile	300x300x8.6mm	12	1.08

Technical Details

Technical Characteristics	Test Method	Requirement	Typical Test Value
Length & width	BS EN ISO 10545-2: 1997	90<S<=190 - ±1.0%, 190<S<=410 - ±0.75%,S>410 - ±0.6%	± 0.2%
Tile thickness	BS EN ISO 10545-2: 1997	S<=190 - ±1.0%, 190<S - ±0.5%	± 2%
Straightness of sides	BS EN ISO 10545-2: 1997	± 0.5%	± 0.2%
Rectangularity	BS EN ISO 10545-2: 1997	± 0.6%	± 0.2%
Centre curvature	BS EN ISO 10545-2: 1997	± 0.5%	± 0.2%
Edge curvature	BS EN ISO 10545-2: 1997	± 0.5%	± 0.2%
Warpage	BS EN ISO 10545-2: 1997	± 0.5%	± 0.2%
Surface quality	BS EN ISO 10545-2: 1997	A minimum of 95% shall be free from visible defects that would impair the appearance of a major area of tiles.	Conform
Water absorption % by mass	BS EN ISO 10545-3: 1997	< 0.5%	< 0.1%
Breaking strength	BS EN ISO 10545-4: 1997	Thickness >= 7.5mm Not less than 1300N Thickness < 7.5mm Not less than 700N	>1500N
Modulus of rupture n/mm2	BS EN ISO 10545-4: 1997	Minimum 35 N/mm ²	>= 45 N/mm ²

Larino Porcelain Wall & Floor Tile Collection

Technical Characteristics	Test Method	Requirement	Typical Test Value
Resistance to deep abrasion mm ³	BS EN ISO 10545-8: 1996	Maximum 175	<= 145
Coefficient of linear thermal expansion	BS EN ISO 10545-8: 1996	Test method available	<6.6 (10 -6/°C)
Thermal shock resistance	BS EN ISO 10545-9: 1996	Test method available	Pass
Frost resistance	BS EN ISO 10545-12: 1997	Required	Pass
Resistance to staining	BS EN ISO 10545-14	Test method available	Conform
Resistance to chemicals, acids and alkalis	BS EN ISO 10545-13: 1997	State classification (low & high concentrations)	Conform
Resistance to household chemicals and swimming pool salts	BS EN ISO 10545-13: 1997	Minimum UB	Conform
Reaction to fire			Class A1, without testing (see Decision 96/603/EC, as amended)

The tiles and images featured on this website and in all literature are representative only and should be used as a guide. Please note that as natural stone is a product of nature, variations in colour, tone and markings are inherent features that make every installation unique. No one sample can represent all the possible permutations that may be present in stone. The information and related graphics published on this site could include technical inaccuracies or typographical errors although every effort has been made for accurate information. Pilkington's reserves the right to amend any product or service offer described without notice.