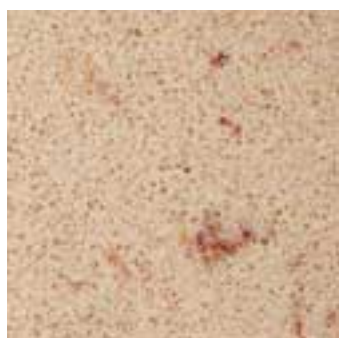
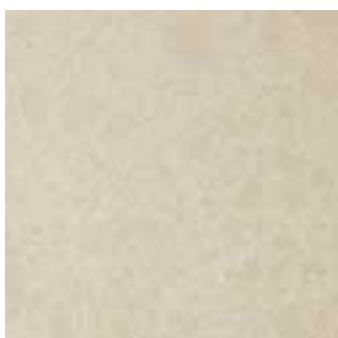
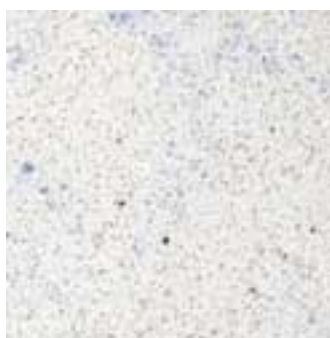

Marmol - Corinthian Conglomerate Stone Floor Tile Collection



Marfil
300.00x300.00x12.00mm



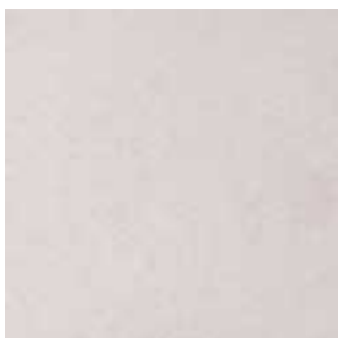
Beige
300.00x300.00x12.00mm



White
300.00x300.00x12.00mm



Grey
300.00x300.00x12.00mm



Dawn
300.00x300.00x12.00mm

Note:

Product Details

Marmol - Corinthian Conglomerate Stone Floor Tile Collection

Product Group	Conglomerate
Typical application	Domestic, commercial and light industrial applications

Pack Details

Tile Type	Size	Tiles Per Pack	m2 Per Pack	Weight Per m2	Packs Per Pallet
Floor Tile	300x300x12.0mm	9			32
Floor Tile	300x300x12.0mm	9	0.81		32
Floor Tile	300x300x12.0mm	9	0.81	31	32
Floor Tile	300x300x12.0mm	9	0.81	31	32
Floor Tile	400x400x12.0mm		0.6		32
Floor Tile	400x400x12.0mm		0.6	31	32
Floor Tile	400x400x12.0mm		0.6	31	32
Floor Tile	600x300x12.0mm		1.08		32
Floor Tile	600x300x12.0mm		1.08	31	32
Floor Tile	600x300x12.0mm		1.08	31	32
Floor Tile	600x400x12.0mm		0.96		32
Floor Tile	600x400x12.0mm		0.96	31	32
Floor Tile	600x400x12.0mm		0.96	31	32
Floor Tile	600x600x12.0mm		1.08		32
Floor Tile	600x600x12.0mm		1.08	31	32
Floor Tile	600x600x12.0mm		1.08	31	32

Technical Details

Technical Characteristics	Test Method	Requirement	Typical Test Value
Reaction to fire		Tiles containing more than 1% of homogeneously distributed organic materials reaction to fire shall be declared	Class A2

The tiles and images featured on this website and in all literature are representative only and should be used as a guide. Please note that as natural stone is a product of nature, variations in colour, tone and markings are inherent features that make every installation unique. No one sample can represent all the possible permutations that may be present in stone. The information and related graphics published on this site could include technical inaccuracies or typographical errors although every effort has been made for accurate information. Pilkington's reserves the right to amend any product or service offer described without notice.